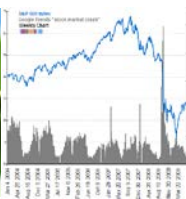
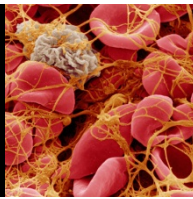
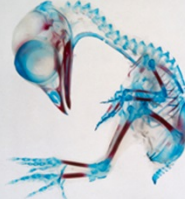


Southern Region Directors Joint Meeting

Models for Private Funding and Partnering



**Sam Pardue, Associate Dean & Director
Academic Programs**

NC STATE UNIVERSITY

LOOKING TOWARD THE FUTURE

A FILM BY CHRISTOPHER NOLAN

INTERSTELLAR

11.07.14
IMAX

1988 Interview Question



Dr. James L. Oblinger

13th Chancellor, NC State

Dean of CALS

Associate Dean Academic Programs

“What do you think about private support for ag research and Academic Programs”

THE MOST INCREDIBLE STORY-EVER!

The INCREDIBLE Shrinking Man



NOT
SUITABLE
FOR
CHILDREN



A UNIVERSAL-INTERNATIONAL PICTURE STARRING

GRANT WILLIAMS·RANDY STUART

with APRIL KENT·PAUL LANGTON·RAYMOND BAILEY

DIRECTED BY JACK ARNOLD·SCREENPLAY BY RICHARD MATHESON·PRODUCED BY ALBERT ZUGSMITH

THE MOST INCREDIBLE STORY-EVER!

The INCREDIBLE Shrinking State Funding



NOT
SUITABLE
FOR
CHILDREN



A UNIVERSAL-INTERNATIONAL PICTURE STARRING

GRANT WILLIAMS·RANDY STUART

with APRIL KENT·PAUL LANGTON·RAYMOND BAILEY

DIRECTED BY JACK ARNOLD·SCREENPLAY BY RICHARD MATHESON·PRODUCED BY ALBERT ZUGSMITH

Public & Private Funding



The screenshot shows the website for 'The Voice of Agriculture', American Farm Bureau Federation. The header includes the organization's logo and name, along with navigation links for HOME, ABOUT US, DIRECTORY, and CAREER. A dark navigation bar contains links for NEWSROOM, VIDEOS, FBNEWS, ISSUES, LEGISLATIVE ACTION, and LEGAL ADVOCACY. The main content area features a 'FOCUS ON AGRICULTURE' section with a date of July 16, 2014, and an article titled 'Will Public Research Keep up with Demands on Agriculture?' by Robert Giblin. The article text discusses the challenges of meeting future needs for food, fiber, and energy, and mentions historical acts like the Morrill Act of 1862, the Hatch Act of 1887, and the Smith-Lever Act of 1914. There are 'Listen Now' and 'Download' buttons next to the article text.

The Voice of Agriculture®
American Farm Bureau Federation®

HOME | ABOUT US | DIRECTORY | CAREER

NEWSROOM | VIDEOS | FBNEWS | ISSUES | LEGISLATIVE ACTION | LEGAL ADVOCACY

FOCUS ON AGRICULTURE

July 16, 2014

Will Public Research Keep up with Demands on Agriculture?

By *Robert Giblin*

Opportunities, challenges and visibility for how agriculture will meet future needs for food, fiber and energy are greater than ever, yet public funding for ag research may not be keeping up.

The abundance, efficiencies of production, safety and quality of food in the U.S. are direct results of agricultural research conducted during the last 150 years. The Morrill Act of 1862 established land-grant universities to educate citizens about agriculture, home economics and other professions. In 1887, the Hatch Act established funding to support land-grant universities and promote the advancement of U.S. agriculture. In 1914, the Smith-Lever Act created Cooperative Extension.

 Listen Now

 Download



December 2010 // Volume 48 // Number 6 // Feature // 6FEA7

PREVIOUS
ARTICLEISSUE
CONTENTSNEXT
ARTICLEPRINTABLE
PDF

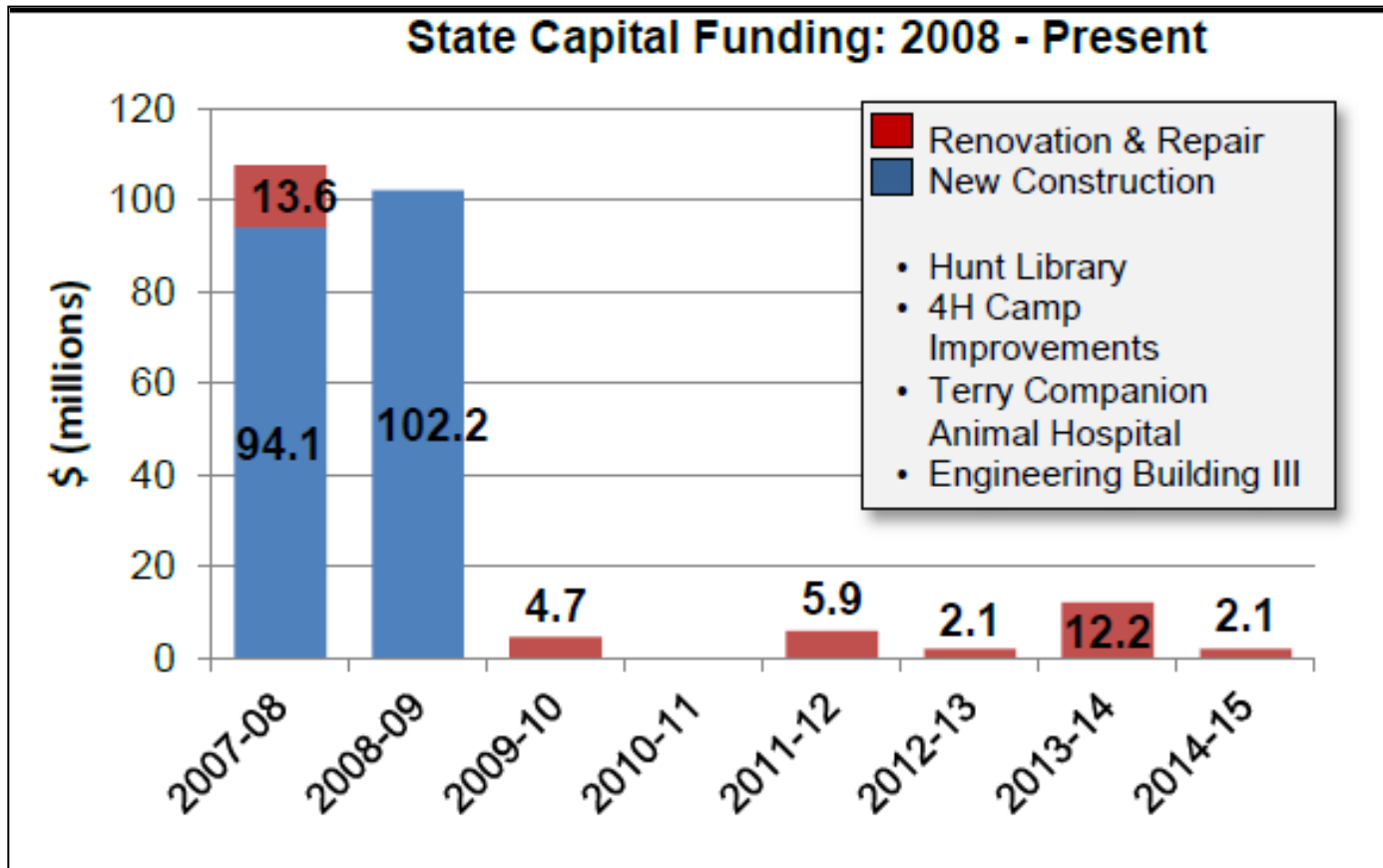
The End of the Beginning and the Beginning of the End: The Decline of Public Agricultural Extension in Ontario

Abstract

Canadian Extension has reached a critical point: the last 20 years have seen drastic reduction in governmental agricultural Extension services in Ontario. This article proposes that the breakdown of the Canadian Extension system has been the result of a variety of factors. The situation in Ontario suggests that Extension in the United States needs to recreate itself: it must address the changing profile of rural residents, shift program foci and delivery models, document and promote its benefits, redefine its contribution to the research system, (re)train Extension experts, use technology creatively, and maintain field staff to protect its role in rural development.

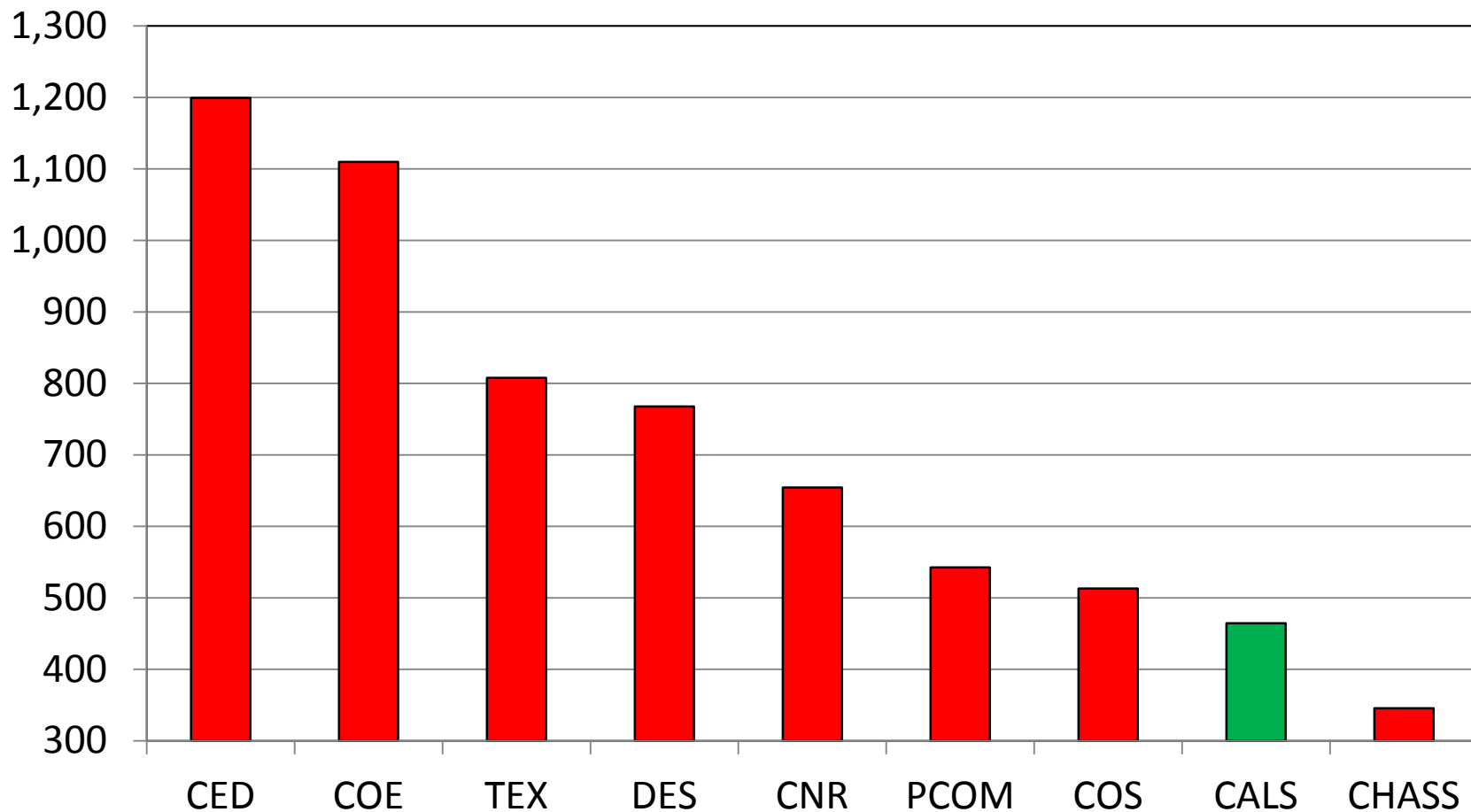
Keywords: [Canada](#), [Ontario](#), [agricultural Extension](#), [Cooperative Extension](#)

State Funding Trends: NC State

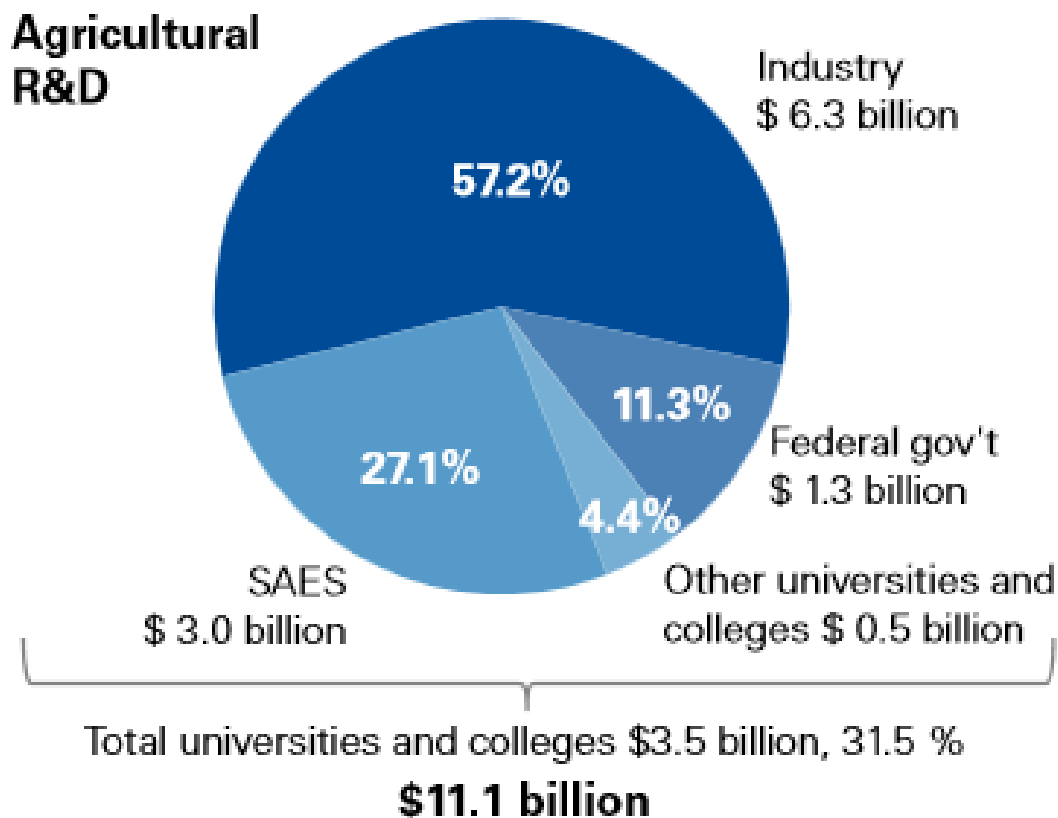


AY 2013-14 16030 Continuing Budget

\$ per SCH

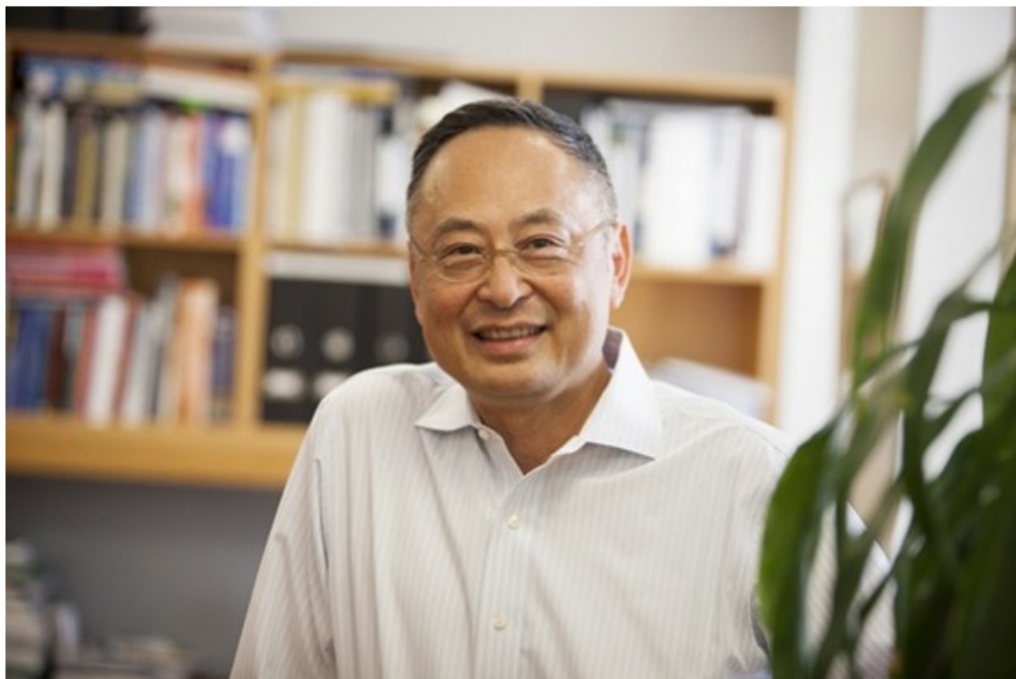


Public & Private Funding



Harvard Public Health's \$350-Million Infusion

News



Photograph by Harvard Public Affairs and Communications

Dr. Gerald Chan found his life's course at Harvard School of Public Health; now, his family's foundation is making a gift that transforms the school's path and potential.

MOST READ

1. [Synthetic Biology's New Menagerie](#)
2. [Loeb Classical Library 1.0](#)
3. [Digital Stress on Teens](#)
4. [Can Pseudonyms Make Better Online Citizens?](#)
5. [From the Battlefield to the Classroom](#)

[more >](#)

HARVARD IN THE HEADLINES

What is this?

Studying Ebola, Then Dying From It

THE NEW YORK TIMES | 9.9.14

[MORE ON HM](#)

Kitchen Vaccinations Spurred Harvard Alumnus to Make Record Gift

BLOOMBERG | 9.9.14

The Most Economically Diverse Top Colleges

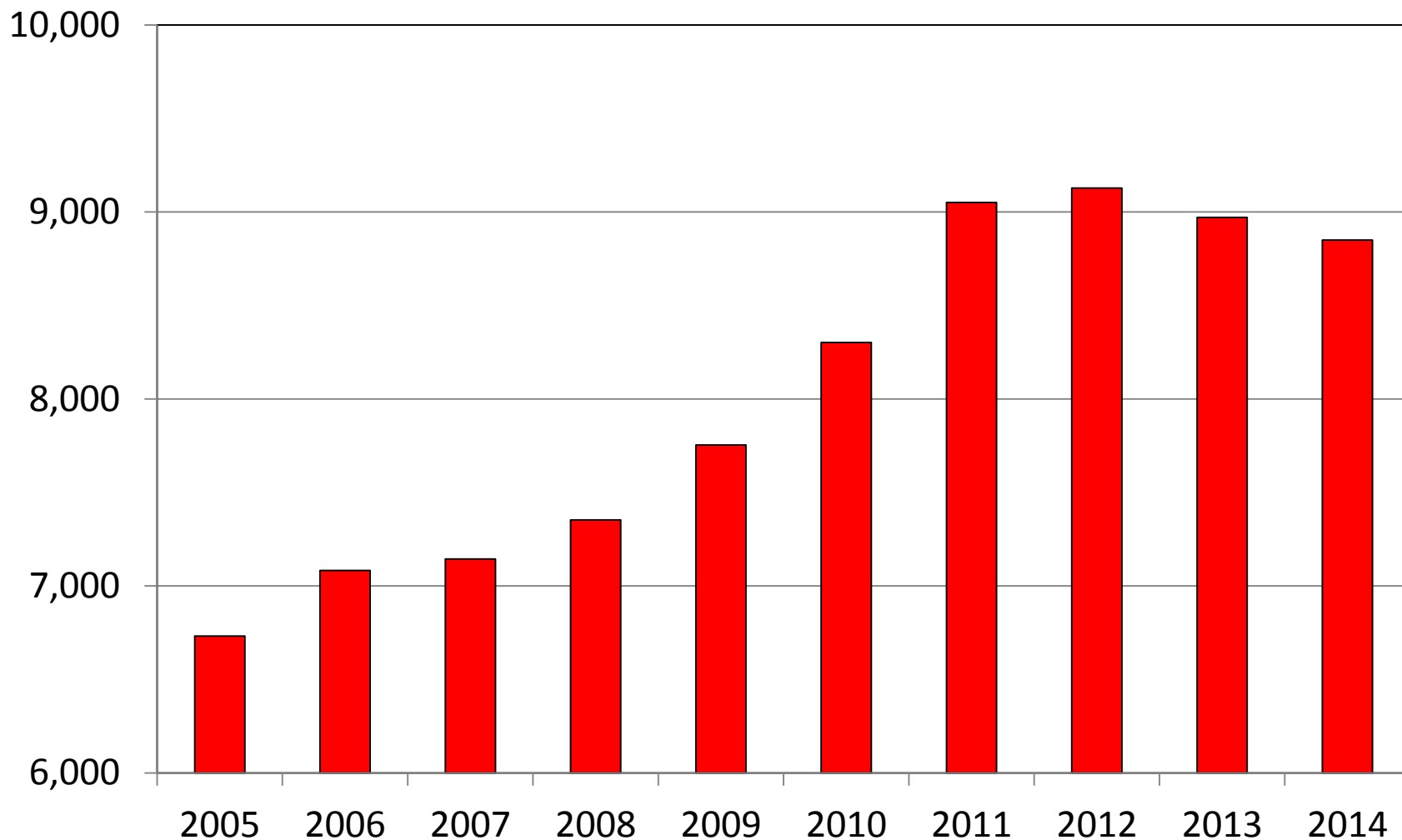
THE NEW YORK TIMES | 9.9.14

Want to Reform the NSA? Give Edward Snowden Immunity

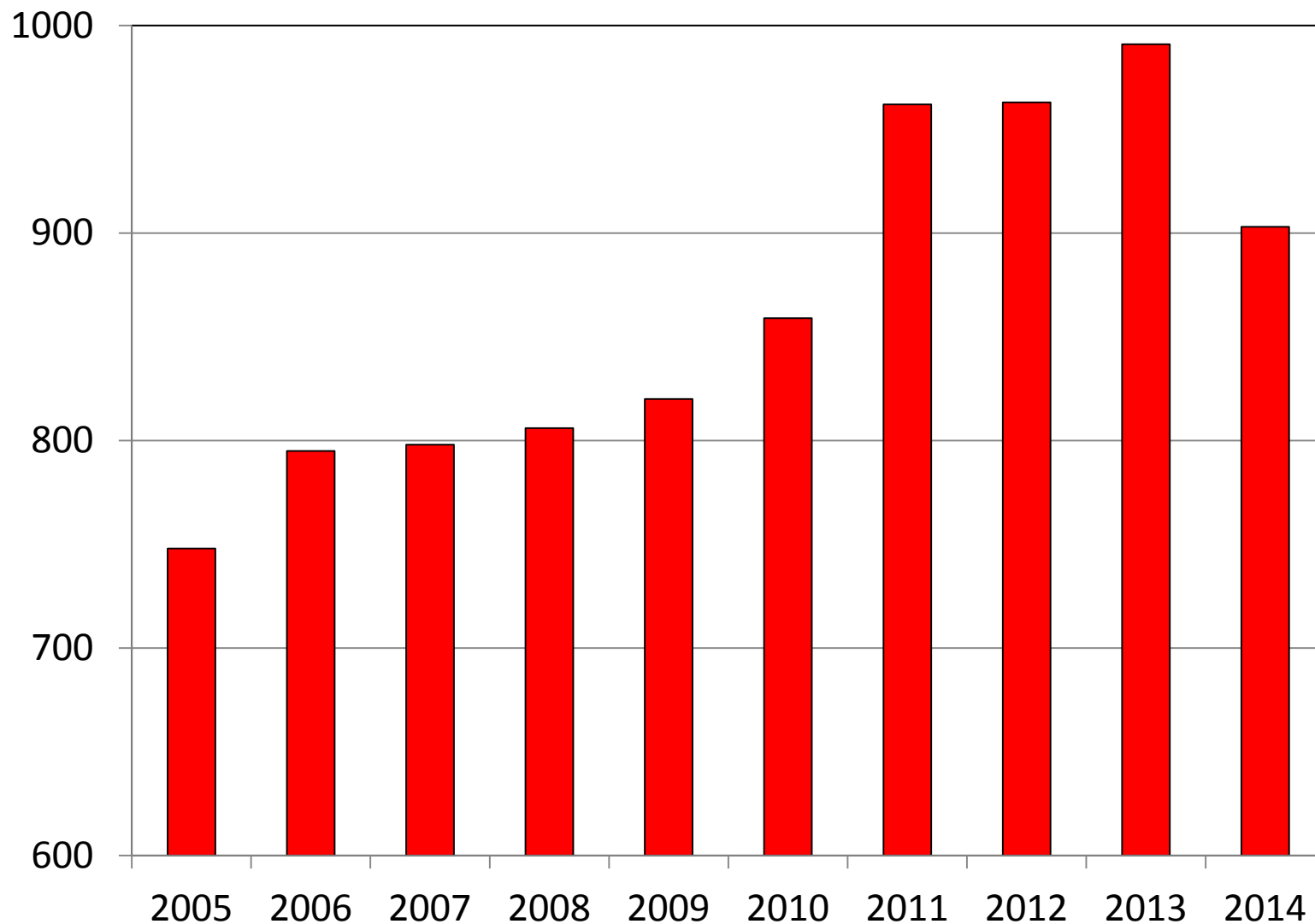
THE ATLANTIC | 9.8.14

[See more headlines](#)

NCSU Graduate Student Trends

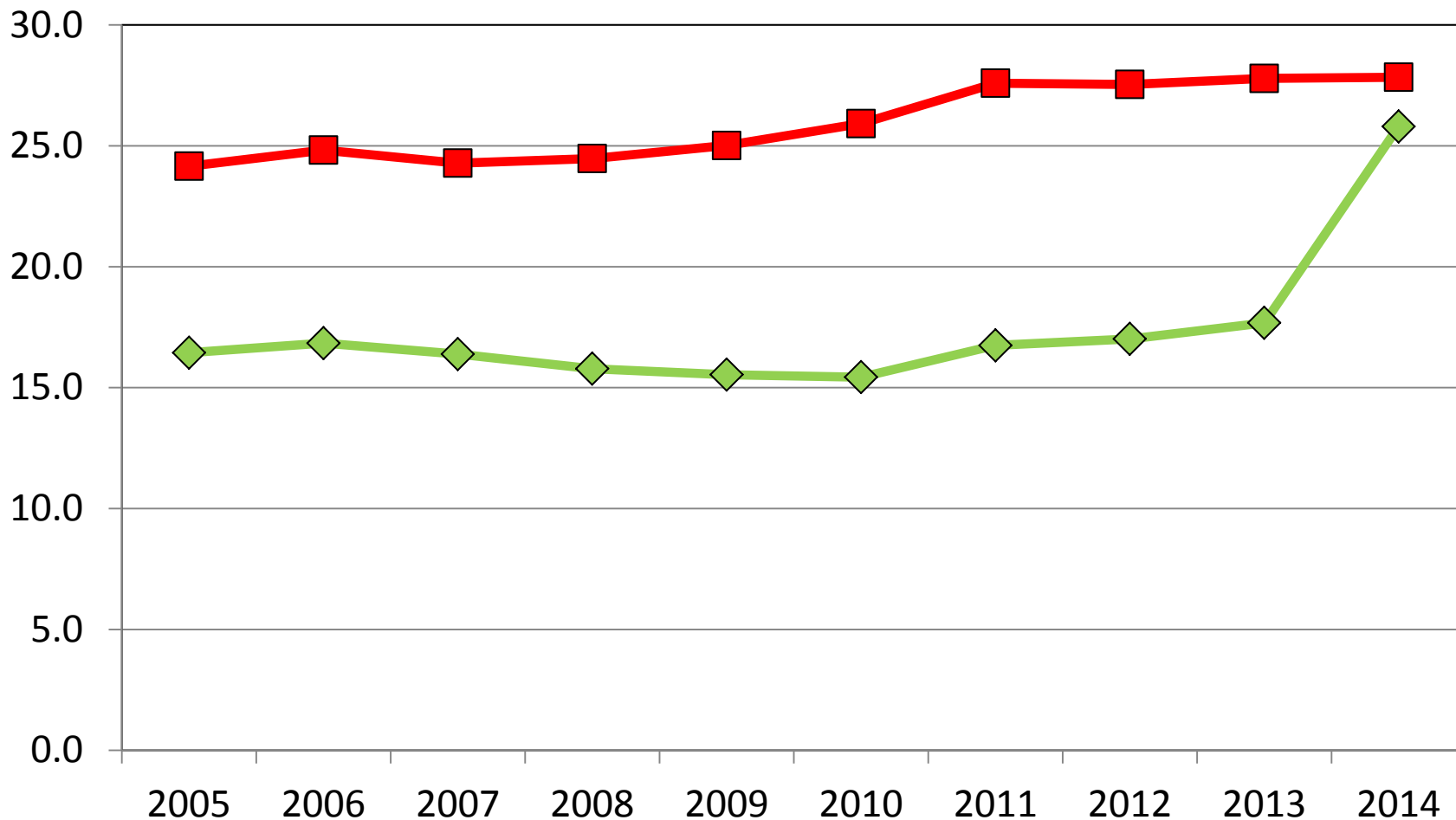


CALS Graduate Student Trends

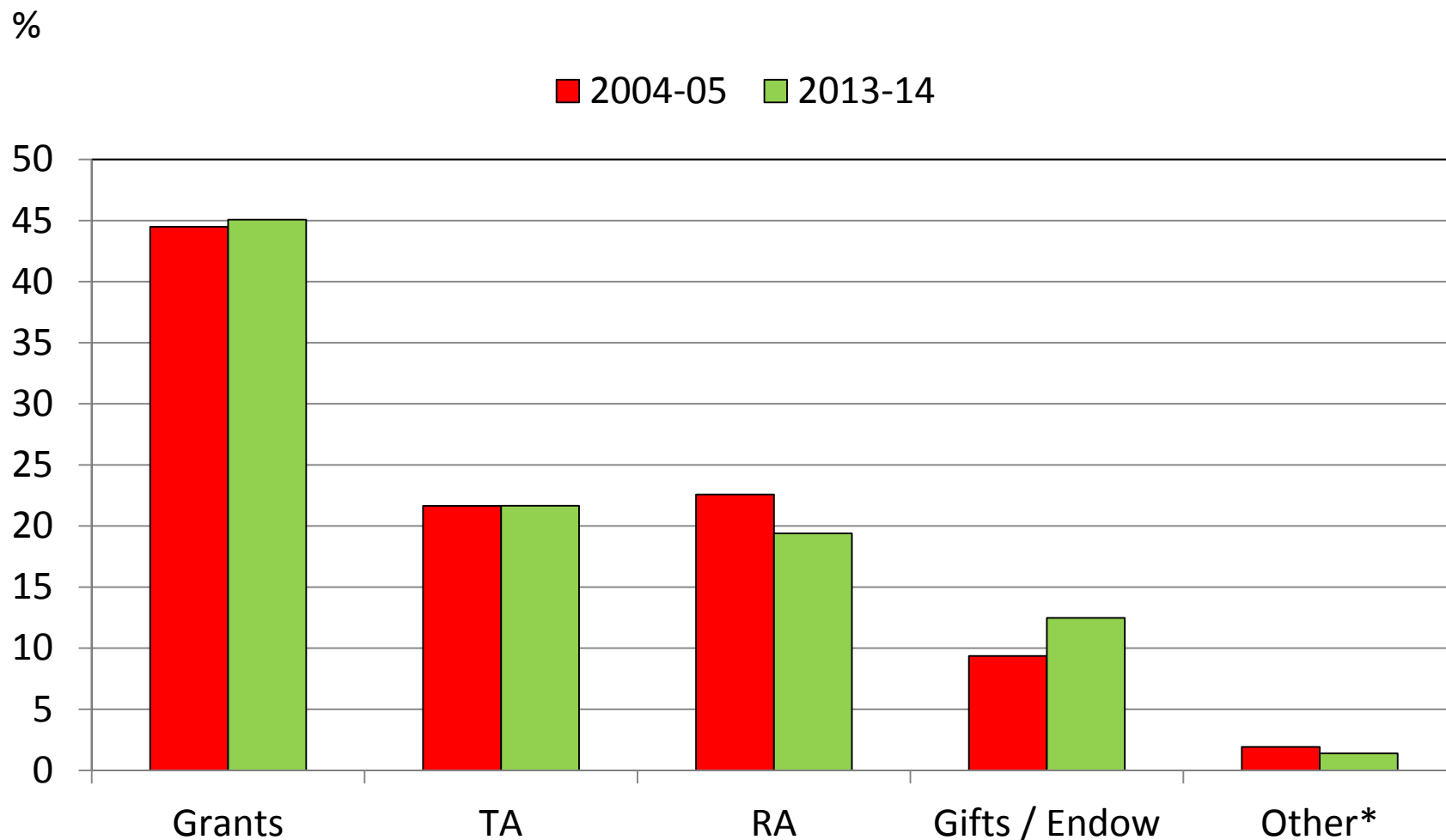


Graduate Students % of All Students

◆ CALS ■ NCSU

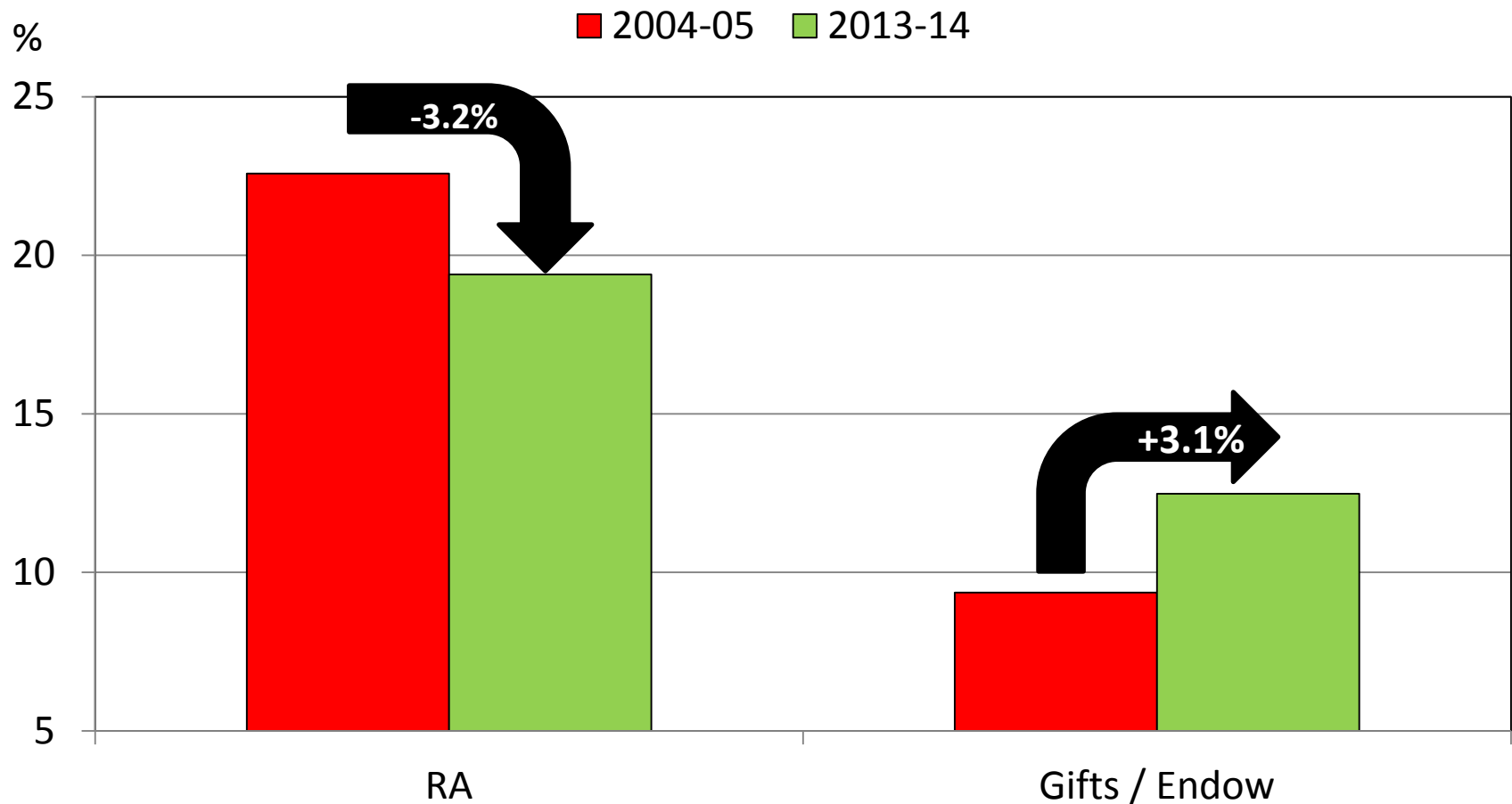


Source of Funding Graduate Stipends



* Receipts, Overhead, CES

Source of Funding Graduate Stipends



GSSP Support Sources

| Funding Sources | | GSHT | ISTA | TR |
|---|---|---------|---------|--------|
| State Appropriations - Ledger 2 PROJECT<=249999 FUND=16030 (Academic Affairs) class 212 | | | | |
| 2-00000 - 2-49999 | State Academic Affairs - Class Ledger 212 (ledger 2 PROJECT<=249999) | Slot | Slot | Slot |
| All Other Sources | | | | |
| 2-00000 - 2-49999 | Distance Education Ledger 2 with Financial Class 215 | Slot | Slot | Slot |
| 2-50000 - 2-99999 | Overhead Receipts - Ledger 2 PROJECT>249999 | College | College | Slot * |
| 3-00000 - 3-49999 | Ed Tech Fee Ledger 3 with Financial Class 23375 | Slot | Slot | Slot |
| 3-00000 - 3-49999 | Appropriated Receipts Ledger 3 with Financial Class 23376 | College | College | Slot * |
| 3-00000 - 3-49999 | Premium Tuition Ledger 3 with Financial Class 23379 | College | College | Slot * |
| 3-50000 - 3-99999 | Auxiliary Enterprises - Unrestricted Trust Funds -Ledger 3 PROJECT>349999 | College | College | Slot * |
| 4-XXX01-4-XXX49 FUND = 16031 | Federal - Ledger 4 < 50 | College | College | Slot * |
| 4-XXX50 FUND = 16031 | State Appropriations - Ledger 4 class code 4162/4172 | College | Slot | Slot |
| 4-XXX51-4-XXX99 FUND = 16031 | Miscellaneous Receipts - Ledger 4 > 50 | College | College | Slot * |
| 4-XXX01-4-XXX49 FUND = 16032 | Federal - Ledger 4 < 50 | College | College | Slot * |
| 4-XXX50 Fund = 16032 | State Appropriations - Ledger 4 (class code 4262) | College | College | Slot * |
| 4-XXX51-4-XXX99 = 16032 | Miscellaneous Receipts - Ledger 4 > 50 | College | College | Slot * |
| 5-XXXXX | Contracts & Grants - Ledger 5 | College | College | Slot * |
| 6-XXXXX | Unassigned Foundations - Ledger 6 | College | College | Slot * |
| 7-XXXXX | Restricted Trust Funds - Ledger 7 | College | College | Slot * |
| 9-XXXXX | Agency Account - Ledger 9 | College | College | Slot * |

* 25% match



Center for Plant Breeding and Applied Plant Genomics

[home](#)

[academics](#)

[distance education
courses](#)

[free online plant breeding
lectures](#)

[plant breeding seminars](#)

[faculty](#)

[students](#)

[former students](#)

[student funding](#)

[history](#)

[research](#)

[projected focus areas](#)

[symposiums](#)

[cultivar and germplasm
releases](#)

[southern vegetable
breeding focus area](#)



The **Center for Plant Breeding and Applied Plant Genomics at North Carolina State University** - with more than 35 core faculty actively developing new cultivars, germplasms and parental lines - has more plant breeders than any other U.S. university. The Center is interdepartmental and focuses on a full range of research programs, courses and crops. Plant breeders at N.C. State are based in different colleges (College of Agriculture and Life Sciences and College of Natural Resources) and departments (Crop Science, Forestry and Horticultural Science), while other departments, such as Entomology and Plant Pathology, have faculty who are extensively involved in breeding programs for field crops, horticultural crops and trees. In addition, faculty members who provide strong support are located in the departments of Statistics, Molecular and Structural Biochemistry, Plant Biology and Genetics. Totally, more than 65 faculty members provide skills in DNA-based marker technology, plant transformation, genomics, proteomics and metabolomics in addition to basic field breeding.

The Monsanto Fellows in Plant Breeding

MONSANTO



- 3 Year Agreement
- 3 Departments: Crop Science, Horticultural Science, and Plant Pathology
- Phase 1: **\$675,000**- 4 Ph.D. candidates & 1 MS
- Match for 5 additional fellowships
- 3 day annual workshop
- Guest Scholar Training Programs, 2 weeks - 2 months
- Phase 2: **\$500,000**

Pioneer Fellows



- 5 Year Agreement
- 2 Fellowships
- Total Funding = **\$500,000**



Bayer CropScience

- Distinguished Professorship
- \$333,000 Gift
- \$167,000 Match (State of NC)
- Total Funding = **\$500,000**

Naming of Departments



**A Historic Transformational
\$10 Million Gift**

Prestige Department of Poultry Science

- Named Professorship: \$2 million
- Graduate fellowships and undergraduate scholarships
- Student internships and study abroad opportunities
- Seed funding for innovative research
- Operational support
- Staffing support
- Infrastructure

Joe & Debbie Gordon



\$3 million gift
“Farm to Philanthropy”
Student Access & Success

“Higher education offers a path to success and this generous gift will help open the doors to college for hard-working students across North Carolina,” Randy Woodson