

Sustaining **High Cost** Research & Teaching Facilities and Programs

Suggested topics:

- dual purpose facilities
- **multi-institutional facilities/programs**
- **industry support**
- facilities needed for teaching after research program ends, etc.

Considerations for Animal Research

- Animal research, per publication, costs as much as 4 times that of crop research
- Federal funding for animal research has declined in recent years
- Experiment Station facilities offer invaluable support for teaching and outreach efforts
- The ideal animal research facility should be research-active, high impact and important to the state economy

Challenges to Animal Research

- Institutional Animal Care and Use Committee requirements (federal mandates)
- Animal welfare concerns of the public
- Environmental compliance/Best Management Practices
- Pasture management and land stewardship
- Costs of feed and veterinary care

Pressure from neighbors



UKAg

UKAg

Case Study 1:

Alltech & UK Nutrition Research Alliance



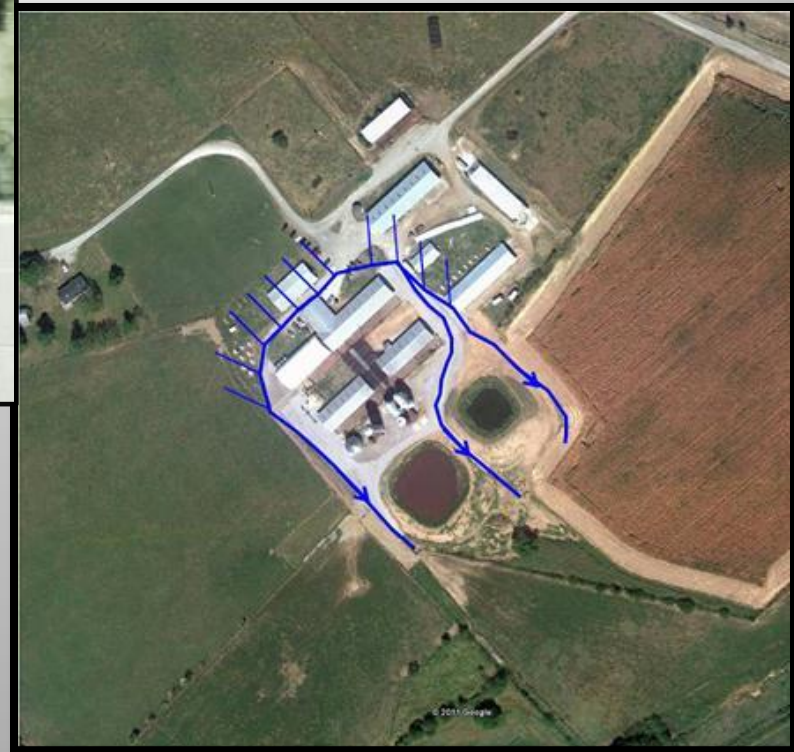
Alliance Operations

- Began in 2004
- Alltech funds operational costs of facility
- Management committee (majority UK)
- Alltech scientists are adjunct professors
- Virtually no restrictions on publications (over 10 in refereed journals each year)
- Additional funding for interns, students and post-docs through Master Agreement

Case Study 2: Dairy



- On site since 1960's
- High phosphorus soils
- Watershed of City of Georgetown, KY
- Visible from interstate/subdivision
- Only milking cows and babies on site
- High research output began in 2010
- High student use



Efforts to partner: UK Dairy

- 2005: Plan to merge with E. Kentucky University
- Over-budget/environmental concerns/stakeholder opposition
- 2010: resumption of plans with EKV/ discussions with University of Tennessee
- 2011-2012: dairy industry asked UK President to preserve and invest in the existing dairy

Meat Science: Regional Teaching Opportunities?

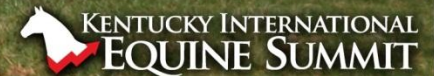
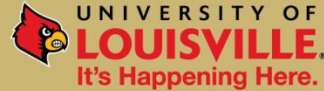


WHERE ELSE...
for an equine education?

Educational Partnerships



RIVALS IN SPORTS PARTNERS IN EQUINE EDUCATION



www.kyequinesummit.com

Monday April 26, and Tuesday, April 27, 2010 Lexington, KY



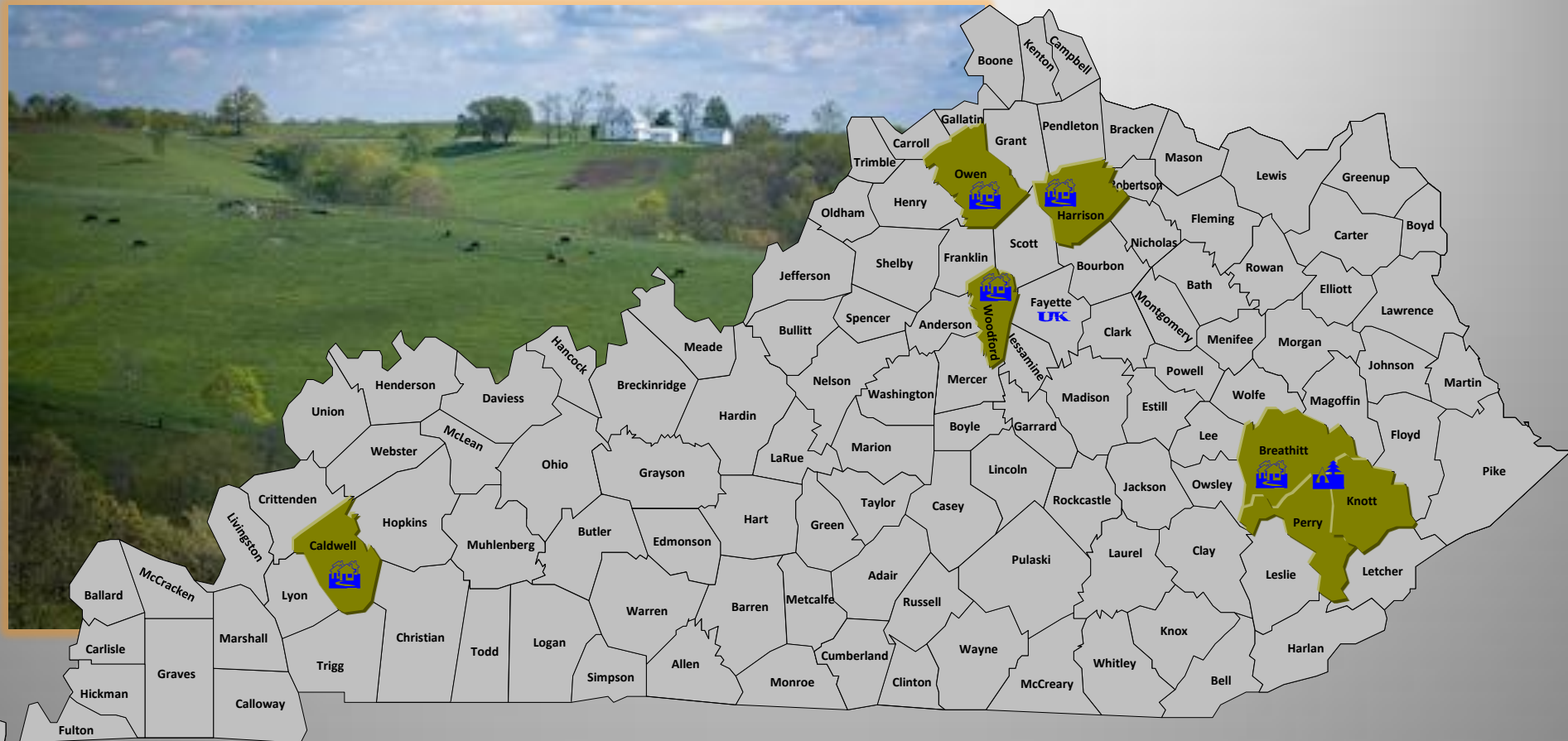
Unsolved: Horse Research



- About 650 horses at UK on less than 300 acres
- Difficulty with sale or euthanasia
- Donations by the public and stakeholders



Case Study 3: Eden Shale facility



- All operations will be suspended December 2012
- Negotiating with the Kentucky Beef Network to operate as a demonstration farm