

Sustaining **High Cost** Research & Teaching Facilities and Programs

Experiment Station farms and facilities: “If we didn’t have them already, we could never afford to create them”—Joe Broder, Academic Programs Section, APLU, 2012

Farms and in-house facilities

Pros

- Largest enrollments are in food and animal sciences (at least at UK)
- Unbiased research, testing, demonstration
- Students without farm backgrounds can learn
- Income production, sometimes
- Have economic impact on the community
- Training for students that can't be duplicated on a commercial farm

High Value Student Experience



Connections as of
last Start:

Jockey:

[Mario G. Pino](#)

Trainer:

[Michael R. Estes](#)

Owner:

[Michael R. Estes](#)

Breeder:

University of
Kentucky

Farms and in-house facilities

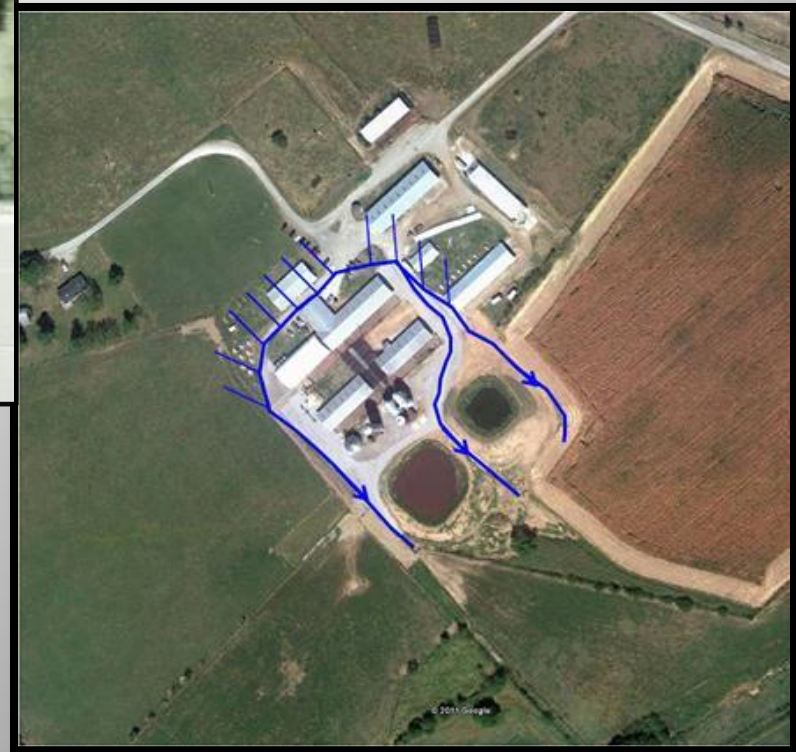
Cons

- There are other ways to learn farming today
- Students can do internships/practicums
- University facilities do not mimic commercial situations
- University compliance, HR and lack of a business approach reduce economic sustainability
- Experiment Station budgets have difficulty supporting increased teaching needs

Case Study: Dairy



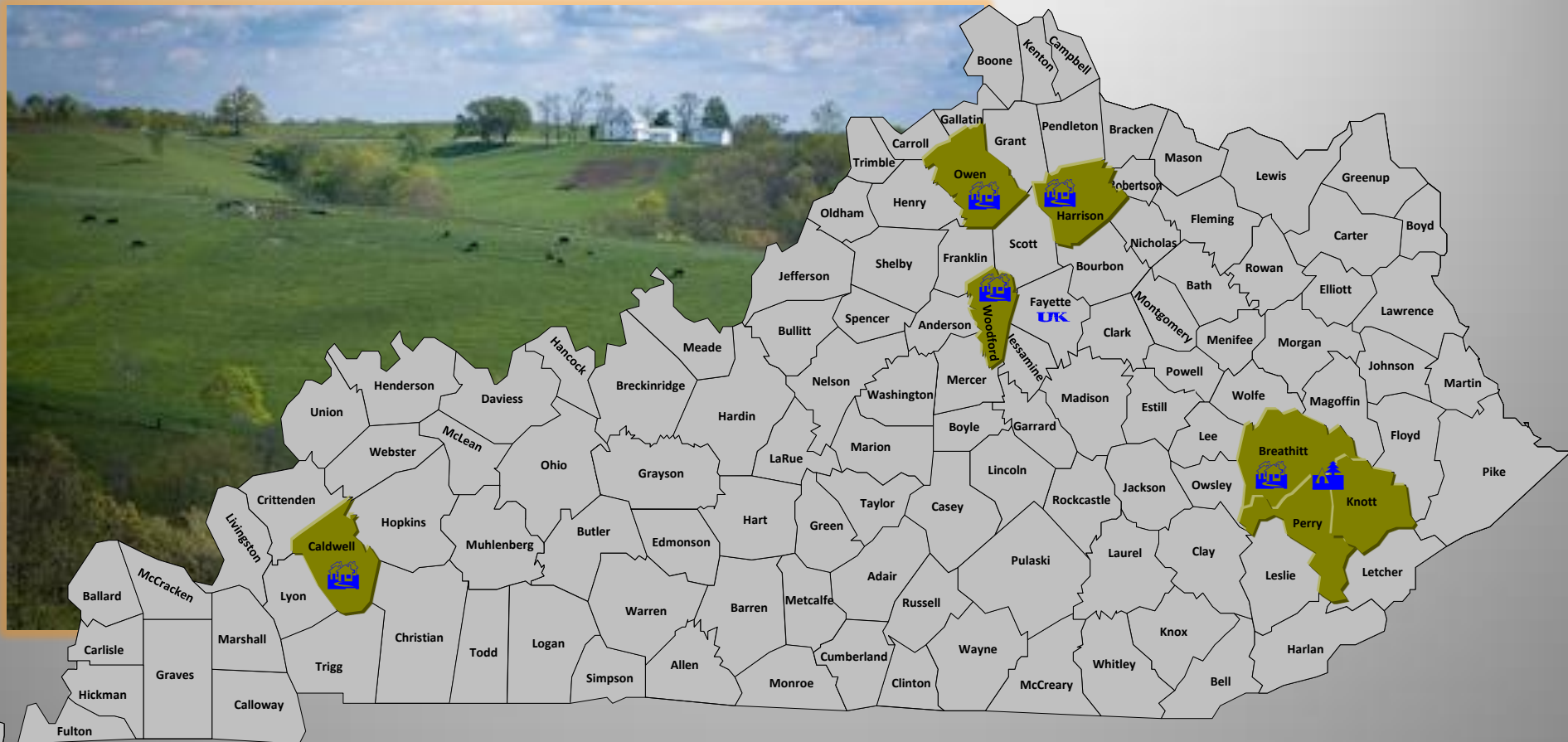
- On site since 1960's
- High phosphorus soils
- Watershed for City of Georgetown, KY
- Visible from interstate/subdivision
- Only milking cows and babies on site
- High research output began in 2010
- High student use



Efforts to partner: UK Dairy

- 2005: Plan to merge with E. Kentucky University
- Over-budget/environmental concerns/stakeholder opposition
- 2010: resumption of plans with EKU/ discussions with University of Tennessee
- 2011-2012: dairy industry asked UK President to preserve and invest in the existing dairy
- No positive response
- We are keeping the dairy anyway

Case Study: Eden Shale facility



- All operations were suspended December 2012
- Kentucky Beef Network now operating this farm through a cooperative agreement

Meat Science: UK Butcher Shop



Questions and Issues

- Can we sustain farming operations that have the capacity to attract a private partner?
- How can we partner regionally on facilities and teaching?
- Should/can tuition help cover costs of farm operations?
- What is best for the students and stakeholders?