

THE NATIONAL ANIMAL NUTRITION PROGRAM (NANP)

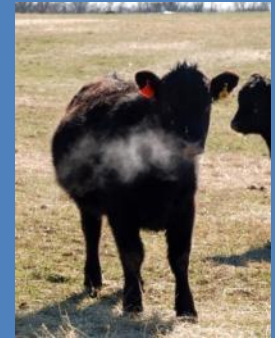
A National Research Support Project (NRSP-9)

**Gary L. Cromwell
Chair, NANP**

Professor Emeritus

**Department of Animal and Food Sciences
University of Kentucky**

*Presented by Lesley Oliver, Assistant Director, KY
Agricultural Experiment Station*



NATIONAL ANIMAL NUTRITION PROGRAM

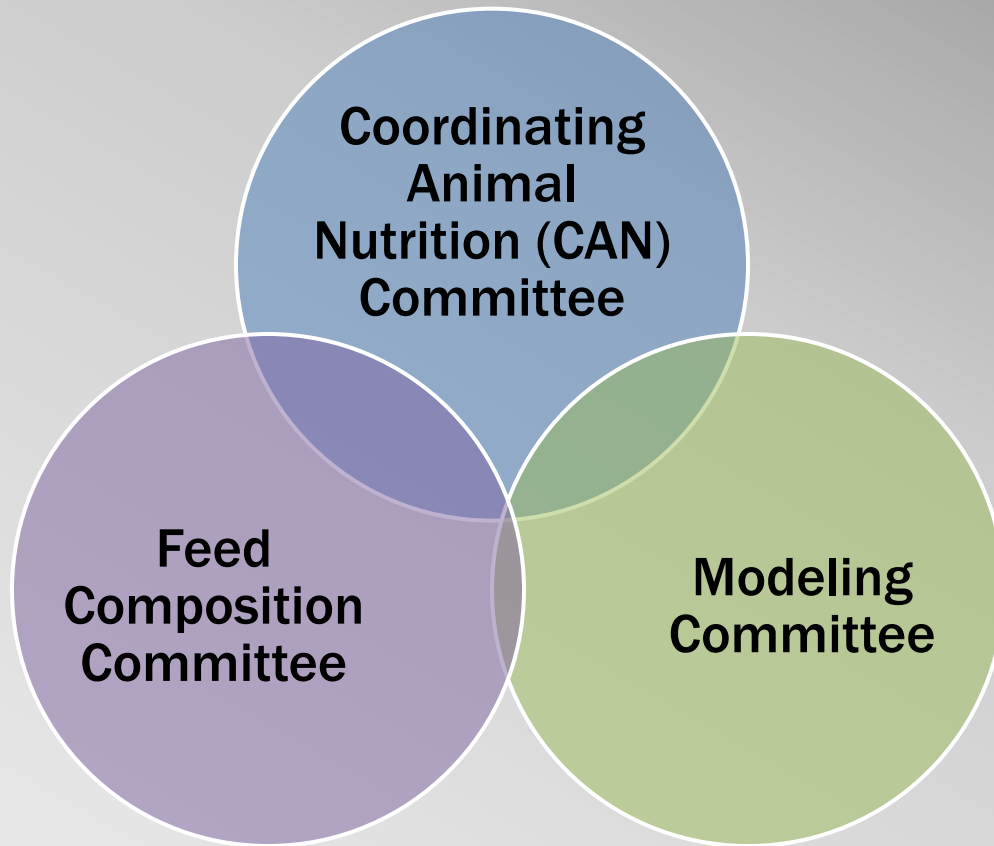
Mission of the NANP:

- Provide an integrated and systematic approach to sharing, collecting, assembling, synthesizing, and disseminating science-based information, educational tools, and enabling technologies on animal nutrition that will facilitate high-priority research across agricultural species.



A major purpose of the NANP is to collaborate with the National Academies, providing support and adding value to updates of NRC reports on animal nutrient requirements.

STRUCTURE OF THE NATIONAL ANIMAL NUTRITION PROGRAM



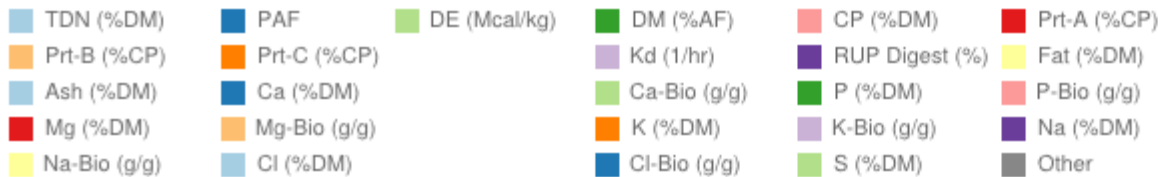
ACCOMPLISHMENTS – COORDINATING COMMITTEE

- **Partnered with ChalkLabs to design a web-based portal to access feed composition and modeling information.**
- **Symposium at Poultry Science Association on “Nutrient Requirement Evaluation and Publication for Poultry – U.S. and Global Perspectives.”**
- **Developing a networking system for scientists working in nutrition and related disciplines.**
- **Planning an inaugural national event focused on the role of animal nutrition in solving high-priority societal challenges.**
- **Abstracts, posters, and exhibition booth at Joint Annual Meeting of ASAS & ADSA.**

ACCOMPLISHMENTS - FEED COMPOSITION

- Developed database structure for feed composition repositories with input templates for beef, dairy, poultry, and swine.
- Collecting feed composition information and populating interactive database.

Dairy



Row: **106**
 Category: **Plant Protein**
 IFN: **1-00-023**
 TDN (%DM): **56.4468733291**
 Energy Eq Class: **Forage**
 PAF: **1.0**
 DM (%AF): **90.3**
 NDF (%DM): **41.6**
 ADF (%DM): **32.8**

Type: **Alfalfa Meal, 17% CP**
 Read Only: **1.0**
 Forage Description: **Dry**
 DE (Mcal/kg): **2.61190257703**
 Lignin (%DM): **7.6**

Row: **1**
 Category: **F**
 IFN: **1**
 TDN (%DM): **5**
 Energy Eq Class: **F**
 PAF: **1**
 DM (%AF): **9**
 NDF (%DM): **4**
 ADF (%DM): **3**

ACTIVITIES - FEED COMPOSITION

- Identifying assays or methods that prove to have potential benefits to diet formulation.
- Working actively with the Modeling Committee to support needs regarding ingredient composition data as model inputs.
- Developing information resources on methods of feed analysis.

Feed Search

Animal:

Feed:

Table:

Column:

Search

A

[Alfalfa Meal, 17% CP](#)

[Almond Hulls](#)

[Ammonium Phosphate \(Di-\)](#)

[Ammonium Phosphate \(Mono-\)](#)

[Ammonium Sulfate](#)

[Apple Pomace, wet](#)

B

[Bakery Byproduct Meal](#)

[Barley Grain, rolled](#)

ACCOMPLISHMENTS - MODELING

- **NRC Dairy Cattle model (2001):**
 - **Two calculation errors were corrected.**
 - **Installation program was recompiled to support 64-bit Windows installations.**
- **NRC Beef Cattle model (2000):**
 - **Created an installation program to allow model to operate on modern Windows-based computers.**
- **Working with researchers to develop and share modeling information.**

ACTIVITIES- MODELING

- **Developing a review of techniques used to evaluate models and collecting feedback from model users**
- **Developing guidelines for reporting dietary information in publications**
- **Developing a database for observational data, for use in model development**
- **Assessing supply and requirement model subcomponents for use across species**

PLANS FOR THE FUTURE

- **Sustain and enhance the activities of the NANP. Initial 5-year project up for renewal for continued funding in 2015. Need to demonstrate additional support (financial, in kind, collaborative, leveraged, etc.)**
- **Work with NRC to find ways to provide consistency and maintain NRC requirement publications between editions (e.g., correcting errors in code, making changes based on compelling need)**
- **Develop targeted summits to discuss critical issues in animal nutrition**
- **Write critical reviews on emerging or urgent topics related to animal nutrient requirements, such as analytical methods for feed analysis**

NATIONAL ANIMAL NUTRITION PROGRAM WEBSITE

<http://nanp-nrsp-9.org>

The National Animal Nutrition Program

A National Research Support Project (NRSP-9)
supported by the Association of Public Land Grant Universities
administered by the National Institute of Food and Agriculture
United States Department of Agriculture

[Home](#) [Search](#) [Committees](#) [Partners](#) [Calendar and Events](#) [Resources](#) [Education](#) [Get Involved](#) [Contact Us](#)

Feed and Ingredient Information

- All
- Dairy
- Beef
- Swine
- Poultry
- Assay Information

Nutrient Requirement Models

- NRC Beef Model
- NRC Dairy Model, 2001
- NRC Swine Model
- NRC Poultry Publication
- User Feedback Form
- General Comments

Animal Performance Information

- All
- Dairy NRC 2001
- Beef
- Swine
- Poultry
- Assay Information

The NANP is searching for a Post-doctoral Associate to serve as a scientific and technical liaison between the NANP Committees and a web development company. Duties of the position, qualifications of applicants, and the application process can be found by clicking the "[Get Involved](#)" button in the green bar at the top of this page.

