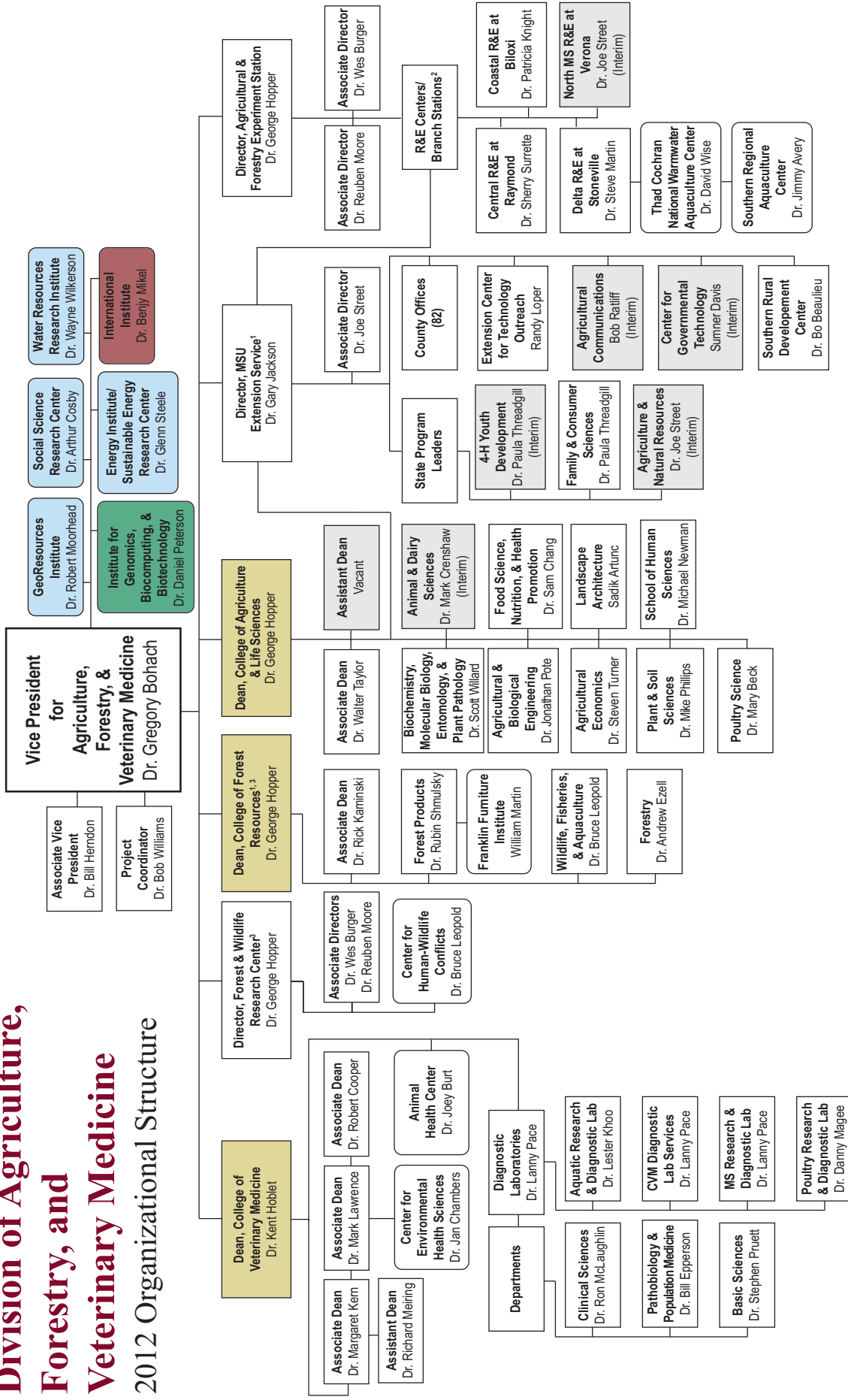


# Division of Agriculture, Forestry, and Veterinary Medicine

## 2012 Organizational Structure



Reports jointly to the VP for Agriculture, Forestry, and Veterinary Medicine and the VP for Research and Executive VP

Reports jointly to the VP for Agriculture, Forestry, and Veterinary Medicine and the Provost and Executive VP

Centers and Institutes

Reports jointly to the VP for Agriculture, Forestry, and Veterinary Medicine, the Dean of the College of Veterinary Medicine, and the Director of the Mississippi Agricultural and Forestry Experiment Station

<sup>1</sup> Departments/schools shown under CALS & CFR are comprehensive units. In most cases, these units include faculty with teaching, research, and/or Extension responsibility. The departments/schools are not repeated in the FWRC, MAFES, or MSUES blocks.

<sup>2</sup> R&E Centers report jointly to Mississippi Agricultural & Forestry Experiment Station and MSU Extension Service. Branch Stations report to R&E Centers.

<sup>3</sup> Legislation creating the Forest & Wildlife Research Center provides that the Dean of the College of Forest Resources shall serve as the Director of the Center.