

# WELCOME

## SAAESD

to

## NC State

### March 27, 2012

**Dr. Johnny C. Wynne**

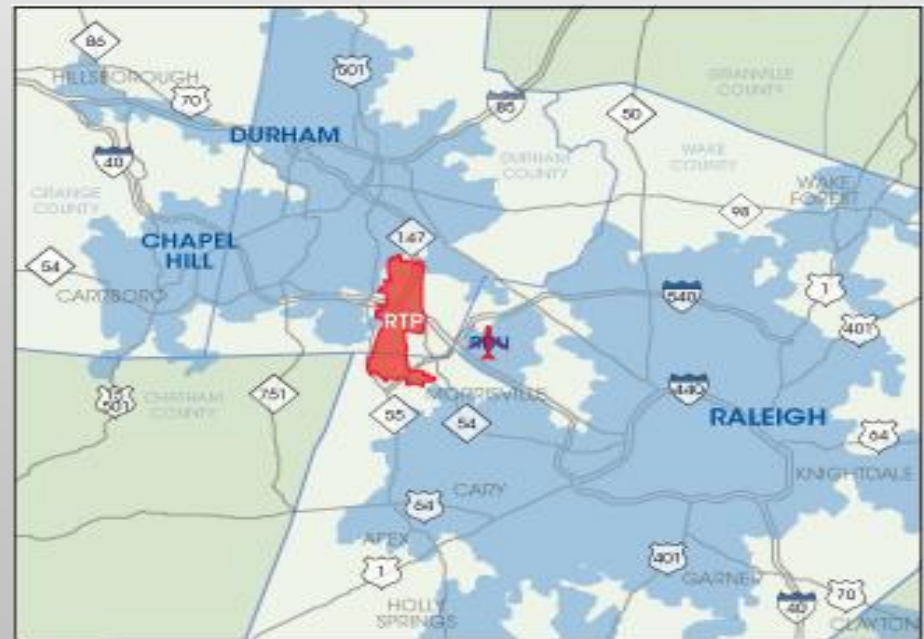
Dean

# Research Triangle

- UNC-CH, Duke University, NC State University
- Raleigh, Chapel-Hill, Durham
- Research Triangle Park - 1959
  - 7000-acre development
  - 157 companies, government agencies
  - 39,000 employees

# Research Triangle

- Thirteen county region
- Population 1,984,000(2009)
- Ag Biotech cluster: BASF, Syngenta, Bayer, Novozymes, DuPont



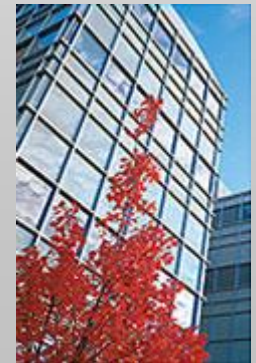
# NC State University

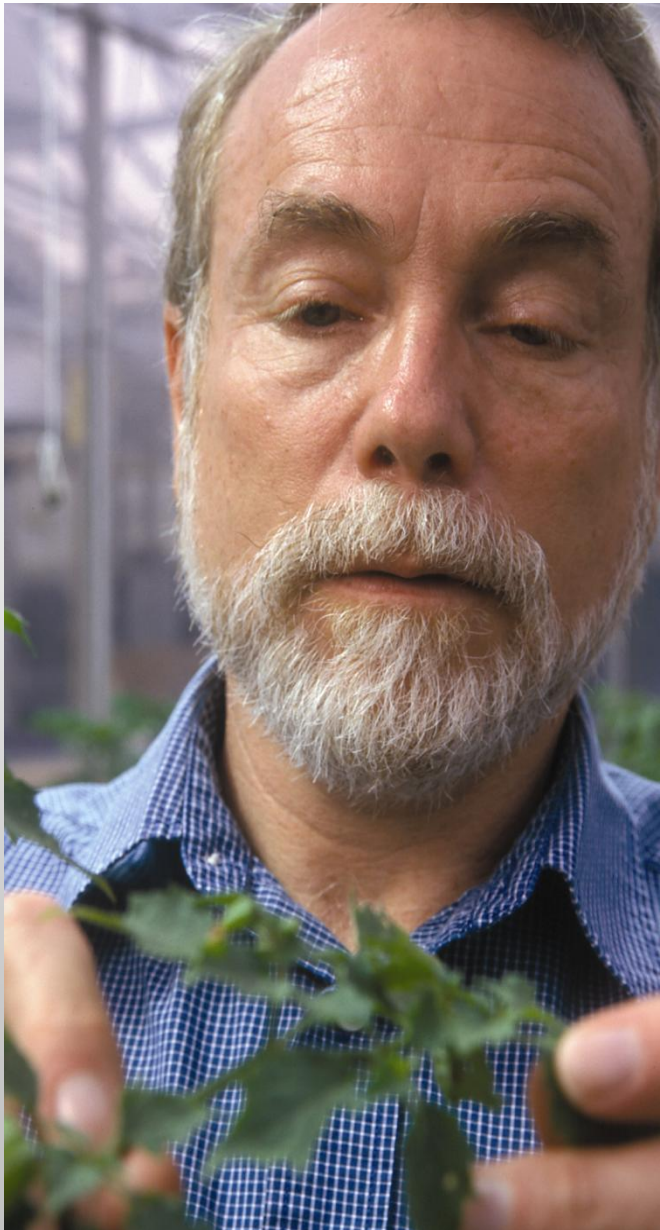
- Established as land-grant college in 1887
- 8,000 faculty and staff
- 34,000+ students
- \$380M research
- 10 colleges
- Top ten in best overall public University value



# Centennial Campus Public-Private Partnership on 1,334 Acres

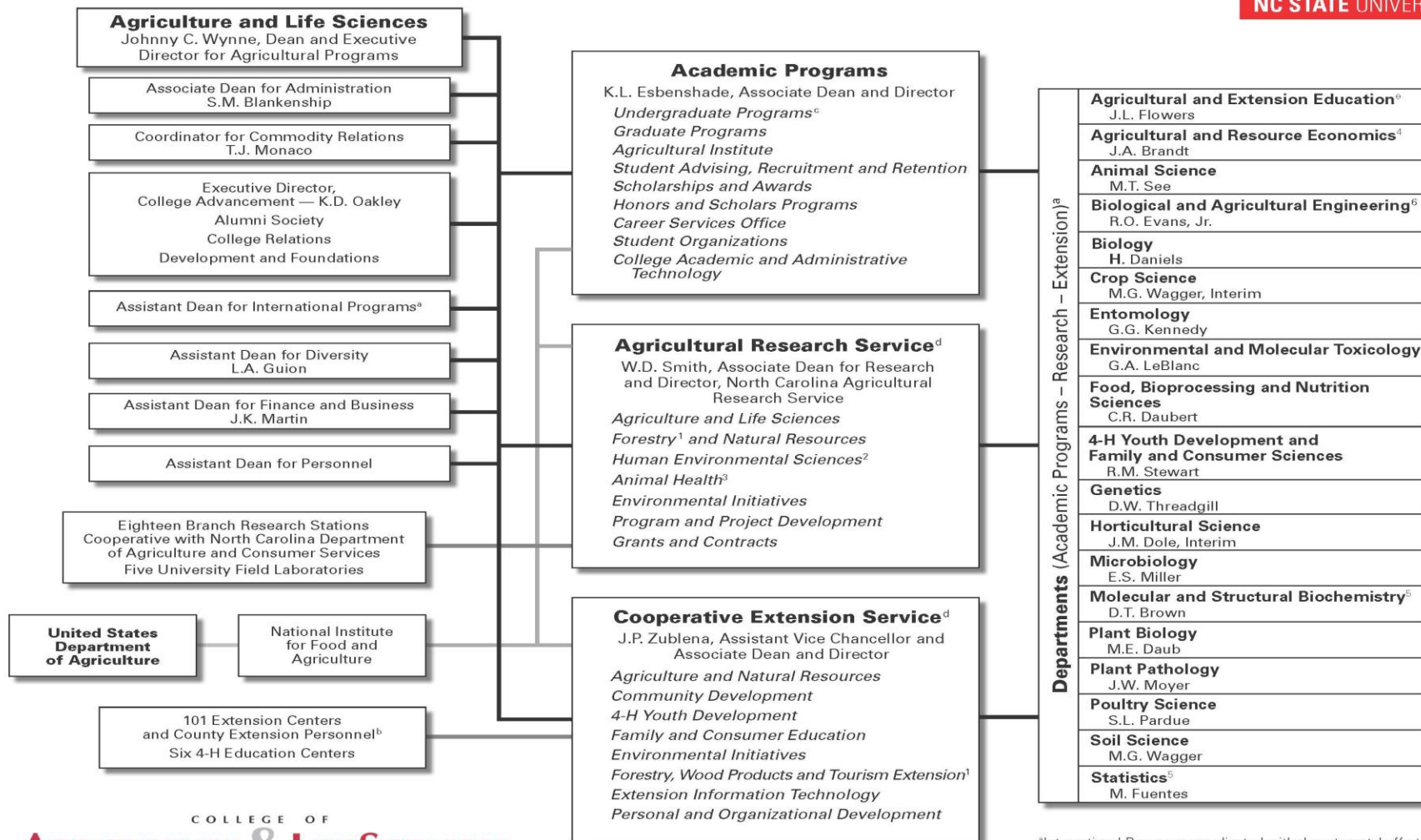
- 61 corporate and government entities
- 2.7 Million sq. ft. space in 25 major buildings
- \$620M invested in facilities
- 8 more building projects to provide another 1.1 Million sq. ft.





## OVERVIEW

- Land-grant mission: *CALS teaches students in disciplines related to agriculture and life sciences, creates new knowledge through innovative research, provides solutions for the public with community-based extension programs, and develops leaders to guide society – all in an effort to improve the economic, environmental and social well-being of our state and the world.*
- Second largest college at NC State
- Locally responsive – globally engaged



Jointly administered with:

<sup>1</sup>College of Natural Resources

<sup>2</sup>UNC at Greensboro

<sup>3</sup>College of Veterinary Medicine

<sup>4</sup>College of Management, Graduate Program

<sup>5</sup>College of Physical and Mathematical Sciences

<sup>6</sup>College of Engineering

<sup>a</sup>International Programs coordinated with departmental efforts in Teaching, Research and Extension.

<sup>b</sup>Administered cooperatively with county governments.

<sup>c</sup>Graduate programs administered through departments.

Interdepartmental programs in Bioinformatics, Biotechnology, Genomic Science, Immunology, Nutrition, Physiology and Plant Physiology.

<sup>d</sup>Cooperative with NC A&T State University.

<sup>e</sup>Includes NC Association of FFA.



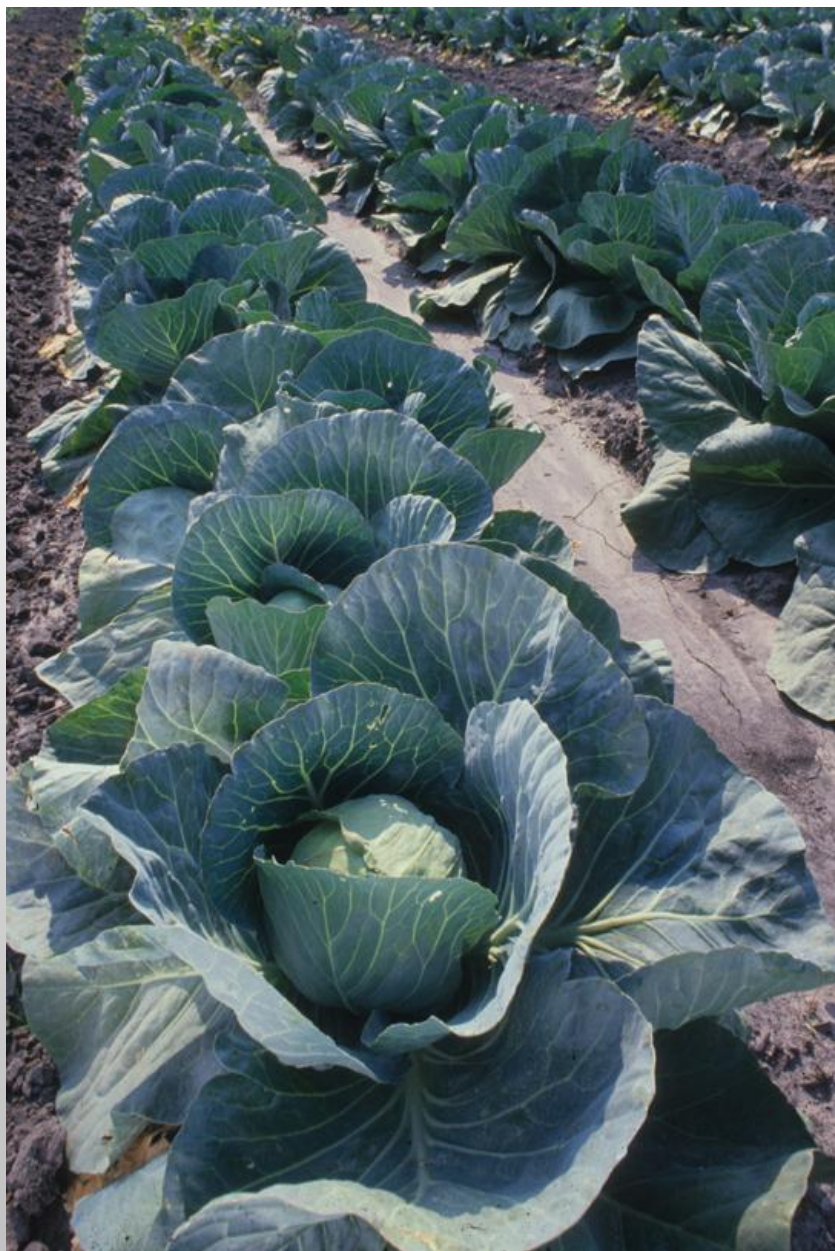
## OUR STUDENTS

- Nearly 6,000 students in 80+ degree programs:
  - Associate: 335
  - Undergraduate: 4,658
  - Master's and doctoral: 968
- 87% in-state students
- 48% of incoming students in the top 10% of high school class
- 35% of bachelor's degree recipients attend graduate or professional schools
- \$900,000 in scholarships awarded annually



# The Pathway to the Future: NC State's 2011-2020 Strategic Plan

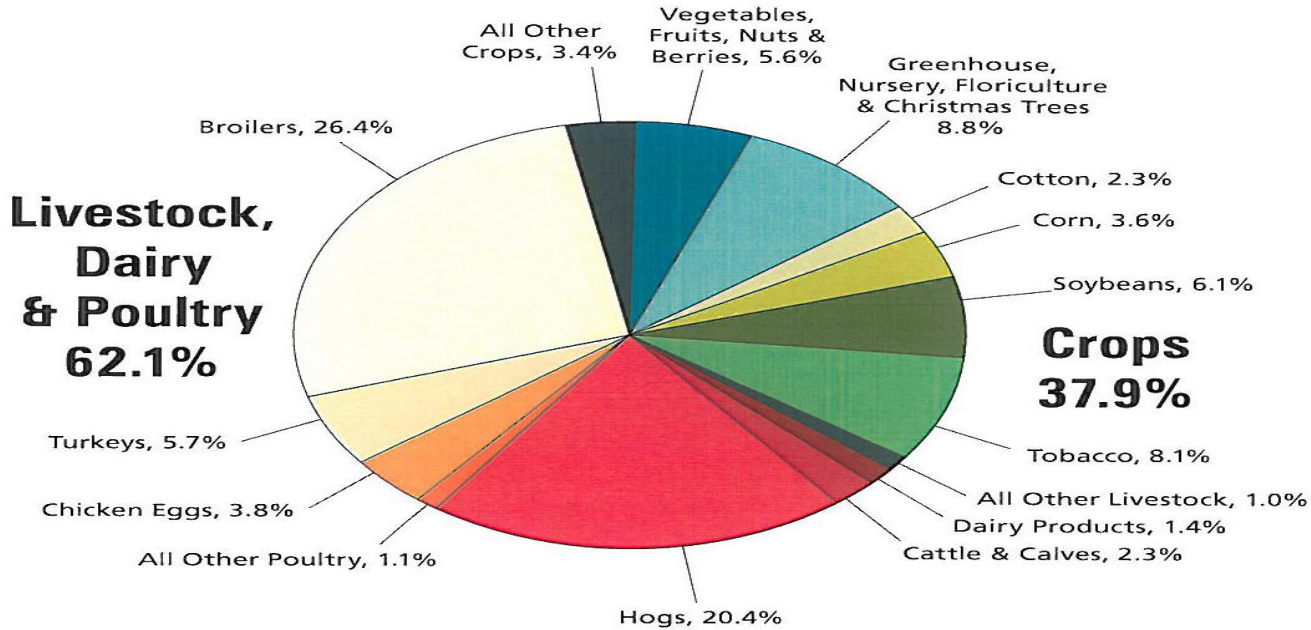
- Food Security
- Environmental Sustainability
- Health and Nutrition
- Economic Development



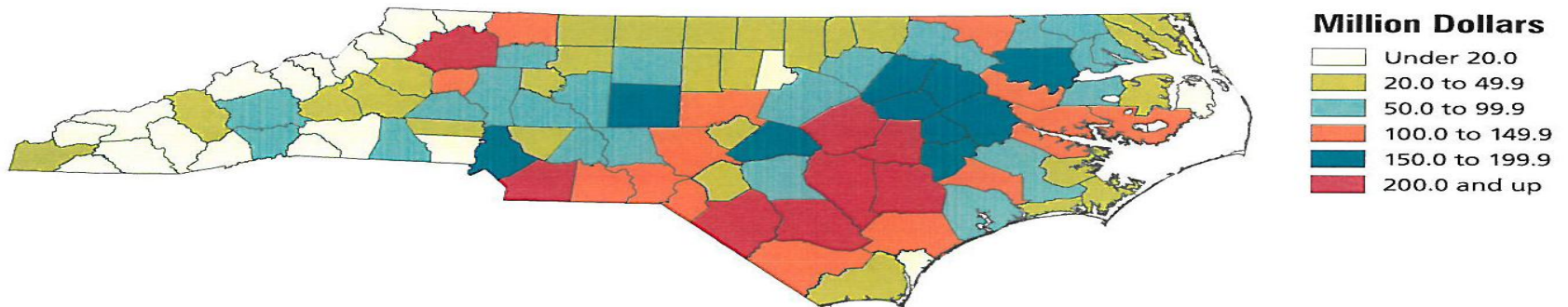
# Agriculture and Agribusiness: Leading N.C. industry

- **Today:**
  - \$74.3 billion industry
  - 18% of gross state product
  - 17% of state's jobs
- **Tomorrow:**
  - Room to grow with rising world population

**SOURCE OF FARM CASH RECEIPTS, NORTH CAROLINA, 2009**  
\$9,187,820,000



**COUNTY CASH RECEIPTS FROM FARM MARKETINGS, 2009**  
Includes Crops, Livestock & Government Payments



# Agricultural Programs

North Carolina Agricultural Research Service  
North Carolina Cooperative Extension



## COOPERATIVE EXTENSION

- Serves 100 counties, Eastern Band of Cherokee Nation
- Program areas:
  - Agriculture
  - Natural Resources
  - Community and Rural Development
  - Family and Consumer Sciences
  - 4-H Youth Development
- ~2 million annual face-to-face educational contacts
- 56,000 volunteers and advisory leaders





## RESEARCH

- 600 research projects related to:
  - 70+ agricultural commodities
  - Agribusiness
  - Life sciences
- 18 agricultural research stations and 10 field laboratories across the state
- Annual research expenditures: \$130 million
- 6<sup>th</sup> in university agricultural research expenditures in the US (NSF, 2008)

# Off-campus Research Stations



# Lake Wheeler Field Lab





# Traditional Enterprises (Animal Agriculture)



# Traditional Enterprises (Plant Agriculture)



Fruits & Vegetables  
\$252M



Soybeans - \$288M



Cotton - \$304M



Tobacco - \$620M



Greenhouse/nursery  
\$832M



Turf



Corn - \$182M

# New Enterprises



# North Carolina Research Campus Kannapolis, NC

- Plants for Human Health Institute
  - 11 faculty
  - 16 support staff
  - Laboratories
  - Greenhouses



CORE LABORATORY BUILDING

# Plants for Human Health Institute

## ■ Changing the way Americans use fruits and vegetables

- sources of nutrients and flavorful calories
- powerful resources for components that protect and enhance health and well-being
- economic value for North Carolina



# Center for Environmental Farming Systems

- CEFS develops and promotes food and farming that protect the environment, strengthen local communities and provide economic opportunities
- Farm to Fork – local foods



# College of Agriculture and Life Sciences

## •Land-grant mission

- Support traditional agriculture
- Develop new economic opportunities
- Leverage resources through public-private partnerships